

# Line 3 Replacement Project

Information for communities along our pipeline right-of-way in Northern Minnesota

## How to reach us:

### General project questions:

- Toll-free: 855-788-7812
- [line3replacementproject@enbridge.com](mailto:line3replacementproject@enbridge.com)

### Landowners:

- Toll-free: 866-331-3493
- [line3project@enbridge.com](mailto:line3project@enbridge.com)

### Vendors and suppliers:

- [enbridge.com/doingbusiness](http://enbridge.com/doingbusiness)
- [enbridge.com/supplierform](http://enbridge.com/supplierform)

### Media inquiries:

- Toll-free: 888-992-0997
- [media@enbridge.com](mailto:media@enbridge.com)

### For more information visit:

- [enbridge.com](http://enbridge.com)
- [enbridge.com/line3US](http://enbridge.com/line3US)



Know what's below.  
Call before you dig.



This newsletter printed by Visions, Inc.  
a Native-owned business.

> This photo shows Enbridge's Line 3 Replacement right of way in restoration leading into a new pump station in northern Minnesota. Livestock graze over the new buried pipeline.



Fall/Winter 2021

Dear neighbor

## Message from Barry Simonson, Randy Rice and Trent Wetmore

We are pleased to report that construction on the Line 3 Replacement Project in Minnesota is complete. As we move from construction into operation of this critical pipeline, we want to extend our sincere appreciation to everyone who has helped make this project a success. We will continue to be a strong community partner and look forward to maintaining and enhancing the countless relationships we have built over seven decades in Minnesota and throughout the construction process of the Line 3 replacement.

Our newsletter communications with you will transition from this Construction Update to a Through the Line newsletter, which is focused on pipeline operations and maintenance. Throughout construction, our priority has been the safety of our workers, the communities in which we operate, and the environment.

This is true of our operations and maintenance as well. Every year our teams stage safety drills, emergency response exercises, and equipment deployment

practice sessions in all our operating regions designed to test and sharpen emergency preparedness in the unlikely event of an incident. We work hard to develop relationships with local first responders and exercise plans we hope never to use but are ready if needed.

While construction crews for the replacement project move on to other jobs, Enbridge is pleased to have supported training opportunities that brought in many new workers to the trades who are now well positioned for their next assignment. Enbridge operations and maintenance personnel will remain part of the communities along our pipeline routes.

For more information, contact a representative listed on the back cover of this newsletter. You can also visit our website at [enbridge.com](http://enbridge.com).

Thank you and best wishes,

**Barry Simonson, L3R Project Director**  
**Randy Rice, L3R Facilities Director**  
**Trent Wetmore, Midwest Region Director**

## Broadband access opens doors to learning

In the northern Minnesota communities of Mahnomen, Waubun and Ogema, internet access can be spotty at best. That's all changing with a \$366,000 Enbridge grant to the Mahnomen and Waubun-Ogema-White Earth school districts that will provide broadband access for 1,400 students. "The tremendous need in this area (convinced Enbridge) that we needed to do something here," says Patrick, a Tribal engagement advisor with Enbridge. "Broadband service really is granting access to equitable learning for kids. It's very important," notes Lisa, superintendent of the Waubun-Ogema-White Earth district. "In rural Minnesota, we work together to make things happen."



> Members of the Mahnomen, Waubun and Ogema Schools leadership and Enbridge representatives at check presentation for much needed broadband access funding for students.

## More than working in the community

Enbridge is committed to supporting the communities near our operations. A few recent examples include:

- Safe Community Grant to Deer River Fire Department
- Honor the Elders Care Givers sponsor, which included donation of blankets
- Blanket donation to the Leech Lake Veterans at Bena Powwow



## Know what's below

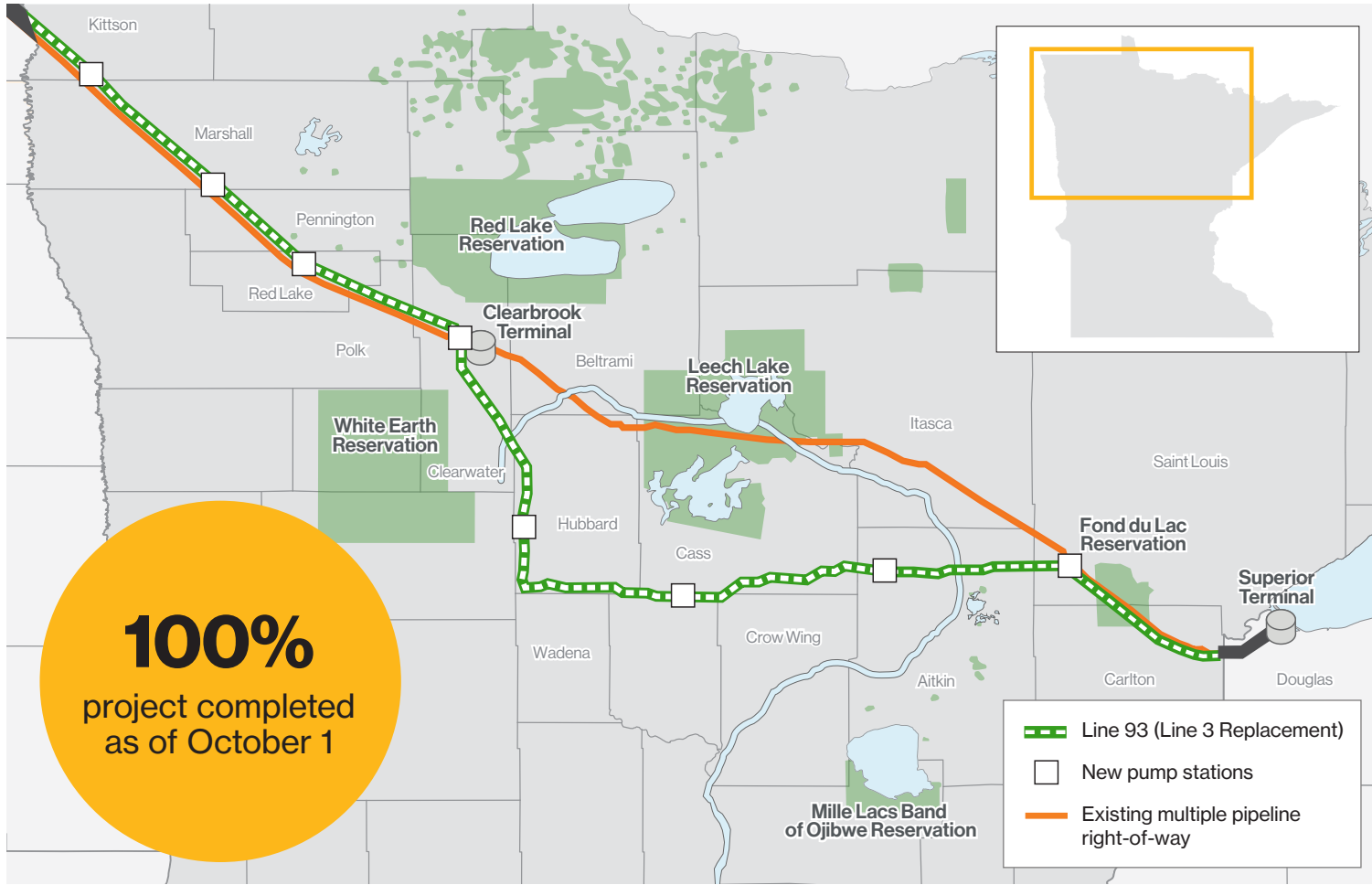
Safety is our number one priority. With Line 3 replaced, we want to remind all community members of the importance of "knowing what's below" any time you disturb the ground surface.

Remember there is a massive and sophisticated network of pipelines and other conduits

carrying crude oil, natural gas, electricity, water, and digital information right under your feet.

Understanding where these utilities are located, before digging or even disturbing the ground, prevents damage, avoids utility outages, and could save lives. Pipeline markers provide an approximate location to be verified prior to ground disturbance. Please remember to call before you dig and know what's below.

# Enbridge Line 3 has been replaced in Minnesota



> One of the final steps prior to putting the replacement pipeline into service involves filling segments with water and pressure testing to above normal operating pressure to show structural integrity. Photo near Carlton, MN.



> During the 24-hour water pressure testing period, signs were posted and property owners made aware. Photo taken in October near Wrenshall, MN.



> Green grass grows over the right of way with the replaced pipeline operating about four feet below ground. Photo from November near Bagley, MN



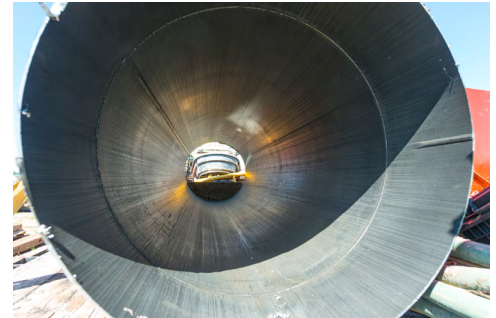
> All eight new pump stations are operating safely to keep North American energy products moving through the new pipeline at about walking pace 24 hours a day. Photo from November in Clearbrook, MN.



> The old Line 3 is now deactivated. It was purged of oil and will be cleaned with a combination of tools with scrubbers like these and cleaning solution.



> A series of these cleaning tools will be put into the now retired pipeline and then removed as they scrub and wipe clean the distance of the old line.



> This is an example of the inside of one section of cleaned deactivated Line 3 pipe that was removed.

Enbridge replaced the existing, aging Line 3 pipeline with new state of the art technology to better protect our environment, create family-sustaining jobs and provide long- and short-term economic benefits to Minnesotans. The old Line 3 has been purged and removed from service and as of October 2021, the new line, now known as Line 93, is transporting crude oil to Enbridge terminals in Clearbrook, MN and Superior, WI.

In addition to the family-sustaining jobs created during construction, Line 93 will continue to benefit Minnesota economies by providing tax revenue that can be used to help finance schools, roads and other community projects, stimulate local economies with ongoing procurement spending and strengthen local community with grants and volunteer labor.

- Currently, Enbridge pays about \$43 million in Minnesota property taxes annually.
- After the first full year Line 93 is fully operational, Enbridge's annual Minnesota property taxes will increase more than \$35 million.
- Enbridge's ongoing operations in Minnesota contributed to \$207.3 million in capital expenditures and \$85.1 million in operating and administrative expenditures in 2020.
- From 2015 to 2017, Enbridge funded 44 Ecofootprint Grant Projects totaling \$3,046,171 during the planning and development of the Line 3 replacement.
- Enbridge invested \$1.4 million in Minnesota community initiatives in 2020.

Learn the facts about the project at [enbridge.com/line3us](http://enbridge.com/line3us).

## Restoration on right-of-way

Small crews will continue to monitor and work on restoration of the right of way as needed and in consultation with landowners through 2022. As transition shifts away from construction to normal operations, landowners will receive annual public awareness communications and have access to Enbridge land agents for questions.

We have employees and more than seventy years of history in Minnesota. We look forward to maintaining safe operations and good relations with the people and communities along our pipeline routes.

**\$9 billion**  
privately funded project

↳ **\$4 billion** in the U.S.

↳ **\$300+ million** with tribal nations, citizens, communities and contractors

**320**  
route modifications  
in response to stakeholder input

**4,000+**  
community engagement meetings  
prior to construction

## Clearbrook aquifer impact investigation and repair

An aquifer was impacted during construction of the Line 3 Replacement Project at a site near Enbridge's Clearbrook Terminal. Enbridge takes protecting the environment seriously and is dedicated to resolving this matter as quickly as possible. We are diligently implementing the Minnesota Department National Resources (DNR)-approved remedial action plan to correct uncontrolled groundwater flows and will continue to work with the DNR on the ongoing restoration, monitoring and mitigation of the site.

Learn more at [enbridge.com/line3us](http://enbridge.com/line3us).



> Repair work site outside terminal.

## "This is incredible work for Native people"

MB Customs, a Native American-owned contractor, helped build Enbridge's new pipeline maintenance shop in Hill City, MN. "Working with Enbridge has been huge for us as a business, and our work in advancing Natives," says Mike, the owner and founder of MB Customs, whose 17 employees include 14 Bois Forte band members and one White Earth band member. Adds Jenna, MB Customs new owner: "There's so much opportunity out here for women and band members. People who want to go and get it—people who want to make their lives better, their families' lives better. So much opportunity."



> MB Customs founder and new owner talk over new maintenance facility plans with Enbridge representative.

## Building America—and a better future

Members of Minnesota-based IUOE Local 49 take great pride in the safe construction of Enbridge's Line 3 replacement. "I feel the way all of our (union) members feel on this project," says Josh, a Pipeline Business Agent with Local 49 and lives in northern Minnesota. "We care about the lakes. We care about the wildlife. It's one of the safest projects you could ask to work on. I know that everything is done right."



> Skilled union workers largely from Minnesota and Midwest states were able to work close to home on the project that now operates where they live and recreate.